

# AiperDock 400

## Installation and User manual





## **Welcome**

---

Dear customer,

thank you for purchasing an Aipermon product and welcome to the setup and usage guide of the AiperDock 400 software. You will notice how easy it is to keep track of your energy balance. Coaches now have a wide array of possibilities to help users reach their goals. Please take the time to read this user manual thoroughly before using your product for the first time.

Best wishes for an active and healthy future!

Aipermon GmbH & Co. KG

# Content

Welcome.....	1
1 Introduction.....	3
2 Disclaimer.....	4
3 Intended purpose.....	5
4 Installation.....	6
4.1 Systemrequirements.....	6
4.2 Installation.....	6
4.3 Configuration of AiperDock 400.....	7
5 Operating.....	12
5.1 Data transmission.....	12
5.2 Extended display.....	13
5.2.1 Main window.....	13
5.2.2 Exit.....	14
5.2.3 Configuration (in main window).....	14
5.2.4 About AiperDock 400 (in main window).....	14
5.3 Connection failures.....	15
5.4 Retried data transmission.....	15
5.5 Date and time .....	16

## 1 Introduction

---

The AiperDock 400 is designed for transmission of activity and energy balance data. This data is measured by patients at home, stored by the device and transmitted via Bluetooth to the Aipermon Service Center (ASC). The transferred data is received and buffered by ASC.

Professional coaches access and analyze the collected data on their workplace where the data can be evaluated.

Use of the software is rather simple and straightforward. The software transmits the data of an AiperMotion fully automatic to the Aipermon Service Center (ASC) after configuration.

We invite you to become acquainted with the simple use of this new system in this manual.

## 2 Disclaimer

---

- Aipermon GmbH & Co. KG disclaims all responsibility and liability for conclusions drawn from any values, graphics or analyses generated by this program.
- AiperDock 400 not designed to be used parallel to AiperView 440. Alternate usage of these two programs will cause data-loss.

### **3 Intended purpose**

---

AiperDock 400 is a software intended to transfer data, received from the Aipermon Telemonitoring platform.

AiperDock 400 will be activated automatically during the start of your computer. After connecting a supported device the stored data will be read-out and transmitted to the Aipermon Service Center (ASC).

## 4 Installation

---

### 4.1 System requirements

The AiperDock 400 software requires Microsoft Windows XP® or Microsoft Windows Vista® with a unrestricted user account. The software is intended for single PC only.

### 4.2 Installation

To install the AiperMonitor 400 software, insert the CD into the CD-ROM drive. Follow the on-screen instructions.

If the CD does not start automatically, open the file labeled *Setup.exe* on the CD and then follow the on-screen instructions.

**Please restart your computer after the installation is finished!!!**

### 4.3 Configuration of AiperDock 400

Upon first startup of AiperDock 400, be sure that your Internet connection is operational.

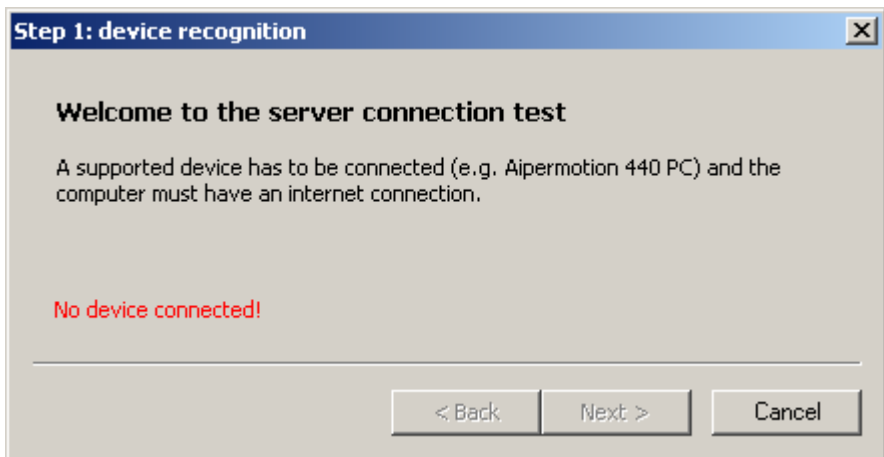
**AiperDock400** will be activated automatically during the startup of your PC.

#### Step 1:

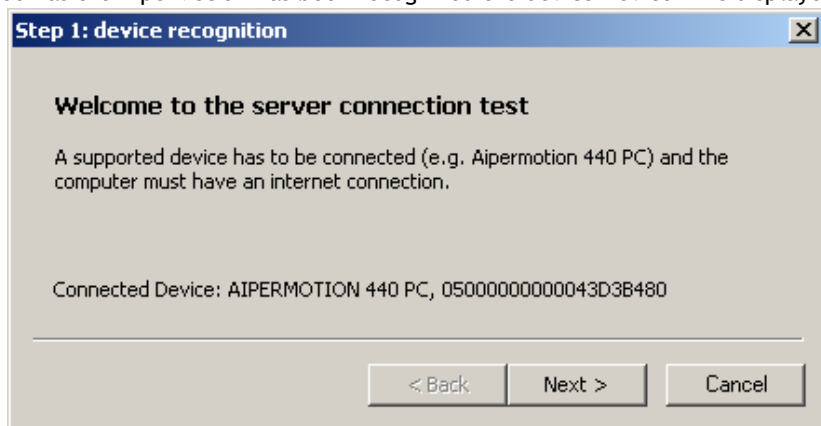
The recognition of connected devices starts.

Please connect an AiperMotion if no supported device is connected to the USB-interface of your PC yet.

Detailed information on this step can be found in the AiperMotion user manual.



As soon as the AiperMotion has been recognized the device Device-ID is displayed.

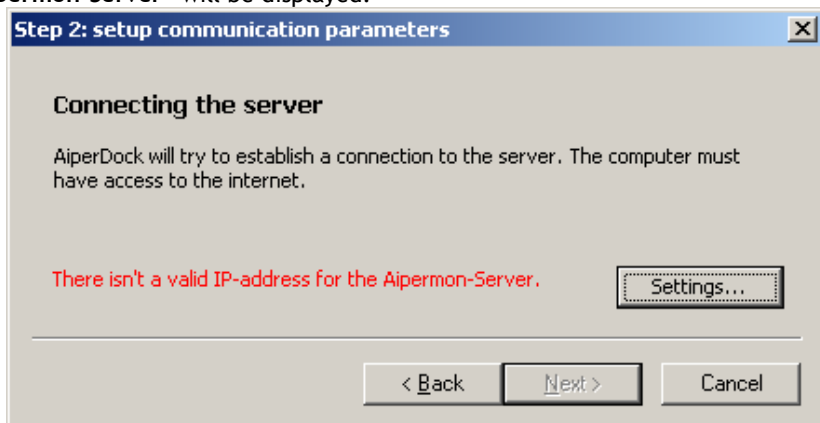


Click **Next**, to continue.

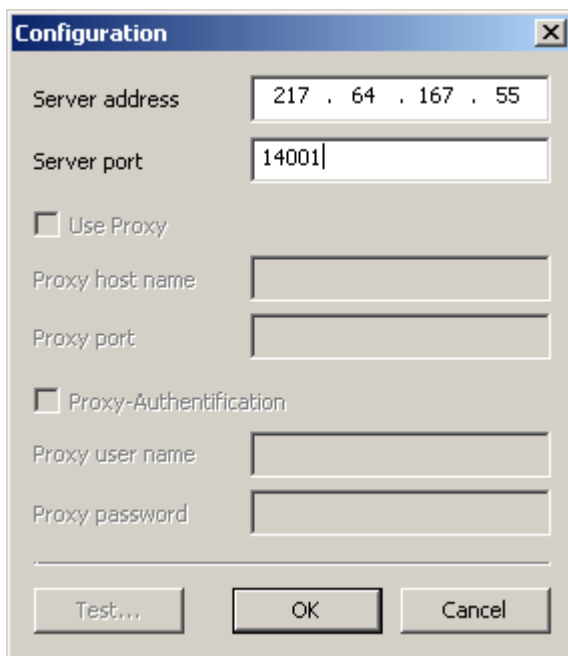
If you want to leave the Application, click **Cancel**.

### Step 2:

The first time you use the AiperDock 400 the message „There isn't a valid IP-address for the Aipermon-Server“ will be displayed.



Click on **Settings** for entering the IP-Address.



**Configuration** [X]

Server address: 217 . 64 . 167 . 55

Server port: 14001

Use Proxy

Proxy host name: [ ]

Proxy port: [ ]

Proxy-Authentication

Proxy user name: [ ]

Proxy password: [ ]

Test... OK Cancel

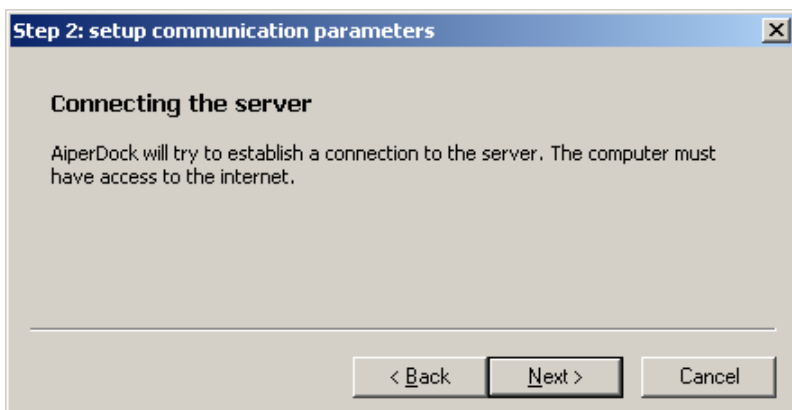
In the settings-dialogue please enter

- Server-Address and
- Server-Port

according to the provided configuration sheet.

To store your inputs, click **OK**.

After setting up the server a new window will be opened.  
Click **Next**, to establish a connection to the server.



**Step 2: setup communication parameters** [X]

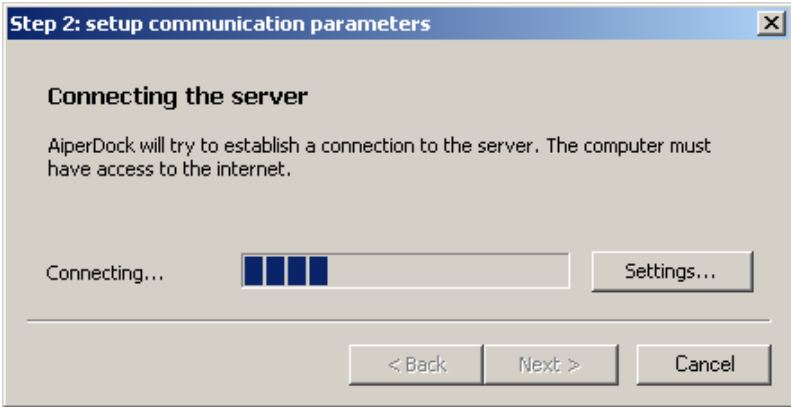
**Connecting the server**

AiperDock will try to establish a connection to the server. The computer must have access to the internet.

< Back Next > Cancel

AiperDock 400 will try to connect to the Aipermon-Server by using the available Internet-connection.

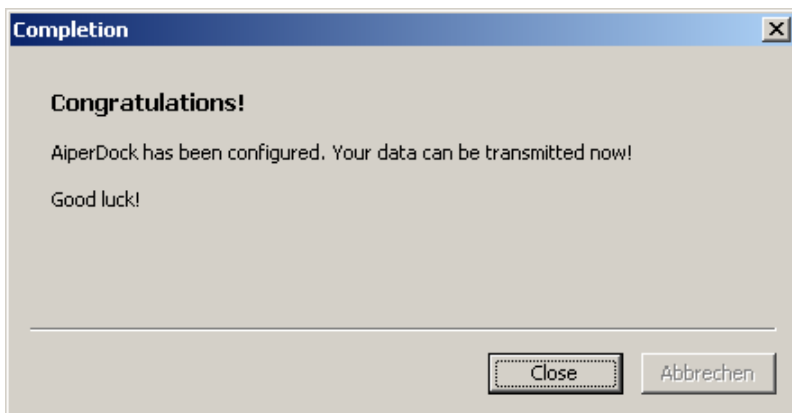
Depending on the kind and speed of your Internet-connection, this action can take several minutes.



Be sure that an Internet connection can be established. If you use a firewall, allow AiperDock 400 communication to the Internet on the server port you entered in step 2.

**Step 3:**

The connection is established if the following message is displayed:



AiperDock 400 is now ready for use. In the system tray the running AiperDock 400 is indicated by the Aipermon-symbol.

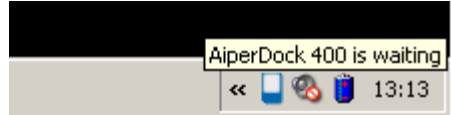


## 5 Operating

---

### 5.1 Data transmission

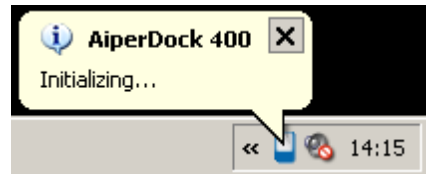
To transmit the data from your AiperMotion to the PC, connect the AiperMotion to your PC while AiperDock 400 is running.



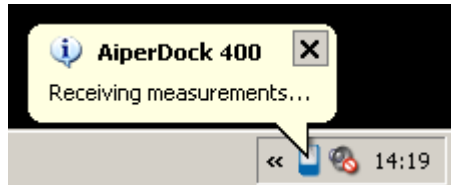
Hint:

The running AiperDock 400 is indicated by the Aipermon-Symbol in the system tray. If you move the mouse-cursor over the Aipermon-Symbol, the tool-tip „AiperDock 400 is waiting“ will appear.

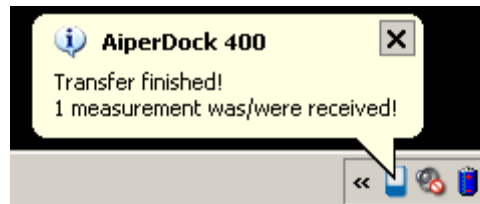
- After your AiperMotion has been detected the following information will be displayed:



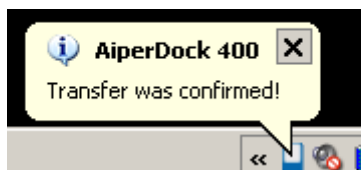
- Afterwards the measurements will be transmitted to your PC



- and buffered on your PC.



- If the data transmission was successful the following message will be displayed:



- Thereupon the measurements will be sent to the Aipermon Service Center (ASC) in background and provided to your Coach.

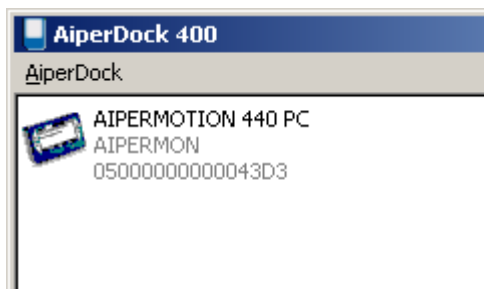
## 5.2 Extended display

With the right mouse button you can start further functions of AiperDock 400.



### 5.2.1 Main window

Opens an application-window, where connected AiperMotion devices will be displayed. Among device-model and manufacturer, the Device-ID (Device Identification number) is shown.



Click on the device symbol with the right mouse-button to start the data-transmission with the pop up - menu.

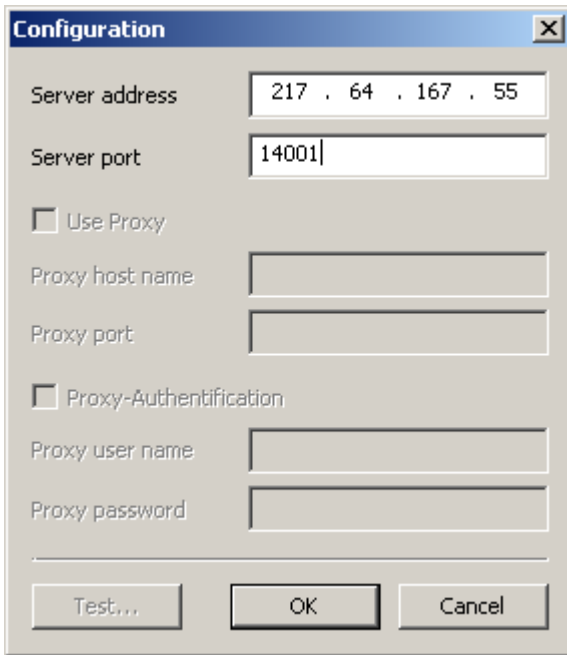
### 5.2.2 Exit

A mouse-click on **Exit** will deactivate AiperMonitor 400.

Hint:

**If AiperDock 400 is not running, no measurements will be transmitted.**

### 5.2.3 Configuration (in main window)



Allows verification of the Server-con-figuration.

With „Test...“ the server-connection can be verified, provided that an AiperMotion is is connected.

### 5.2.4 About AiperDock 400 (in main window)

Shows the version number of AiperDock 400.



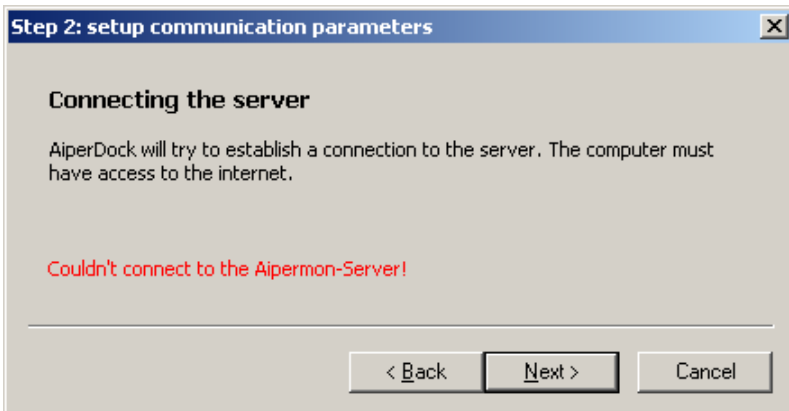
### 5.3 Connection failures

If AiperDock 400 can not connect to the Aipermon Service Center (ASC), the Aipermon-Symbol in the System tray will appear red.



In this case check your Internet-connection. For that purpose use the option **AiperDock → Settings → Test** in of the main-window.

If no Internet-connection can be established the following message will be displayed after awhile:



Check your Internet-connection and if applicable your firewall configuration.

### 5.4 Retried data transmission

The following message will appear, if you try to transfer measurements from the AiperMotion shortly after a successful synchronization.

This is a hint, that no more data is available on the AiperMotion yet.

The period between two data-transmissions should be at least 24 hours.



## **5.5 Date and time**

During every data-transmission, the clock of the AiperMotion will be synchronized with an Internet time-server.

Date and time of your PC will stay unchanged.

If the AiperMotion displays a wrong time after data-transmission, please check the system date and time, as well as timezone and daylight-saving time on your PC.



**Manufacturer**

Aipermon GmbH & Co. KG

Zamdorfer Str. 100

81677 München

Germany

Tel: +49 (0)89 97890-0

Fax: +49 (0)89 97890-199

[www.aipermon.com](http://www.aipermon.com)

[info@aipermon.com](mailto:info@aipermon.com)